



## Acknowledgements

Easington Parish Council would like to thank all of the members of the community and local businesses who have taken part in the consultation exercises by attending events and completing questionnaires.

Easington Parish Council would like to thank the volunteers who have devoted time to draft, distribute and collect questionnaires, collate results, take photographs, build displays, organise events and draft the parish plan

Easington Parish Council would like to thank National Lottery Awards for All for providing financial assistance to develop the parish plan

Easington Parish Council would like to thank Peter Hirschfeld from Humber & Wolds Rural Community Council for his support and advice in producing the parish plan

Easington Parish Council would like to thank Karen Wood from East Riding of Yorkshire Council for her support and advice in the production of the parish plan

# Contents Page

Item	Page Number
Introduction	1
The Research (Development of the Parish Plan)	2
Easington Parish (The Context)	3
Results & Recommendations	
• Demography	5
• Likes & Dislikes	6
• Traffic & Road Safety	7
• Footpaths & Street Lighting	10
• Public Transport	11
• Housing	13
• Services	14
• Environment	15
• Churches & Chapels	16
• Crime & Community Safety	17
• Communication	18
• Facilities	19
• Miscellaneous	20
Action Plan and Review	21

## Introduction

Communities everywhere are constantly changing. The government wants local communities to take more control of their own lives, to say what they want to happen in their own community or parish and for communities to work with other organisations to get it done.

The government 'Community Empowerment White Paper' came into effect in April 2009. It placed statutory obligations on local authorities, health authorities, police and other services to 'consult, inform and involve citizens and communities' in decisions about the delivery services. And it called 'Communities to Action' providing the opportunity for petitions to enable communities and their local councillors to initiate action where problems are not being addressed.

Community Led Parish Plans give an opportunity for everyone in the community to make themselves heard. They provide a way in which residents can say if they want more open spaces, more effective public transport, affordable housing, better access to services and how the community can work together to make the most of their social and leisure time.

The Easington Parish Plan which covers Easington, Kilnsea, Out Newton & Spurn Point, sets out the views of the residents of the parish, their aspirations for the future and a detailed action plan to assist statutory bodies, parish organisations and individuals to work together to achieve these aspirations.

It has been created via a series of consultation exercises providing everyone within the parish the opportunity to have their say.

The parish plan will be used in a variety of ways:

- (i) As a reference document available to provide evidence of the views, aspirations and needs of the parish. This evidence will support service providers, the parish council and the parish community organisations to lobby for services and bid for funding
- (ii) As an enabling document providing the opportunity for issues raised to be explored in more depth, promoting discussion and the consideration of different solutions
- (iii) To support partnership working between individual residents, community and statutory organisations to work together for the benefit of everyone

This parish plan builds on two previous community surveys carried out within the parish. It identifies and encompasses changes that have taken place and raises new issues and challenges for the community.

The Parish Plan should be considered as a living document, a snap shot of opinion recorded in late 2008, discussed and developed for publication and evolving over time. It was formally adopted by the Easington Parish Council on 3<sup>rd</sup> November 09.



# Development of the Parish Plan

The parish plan has been developed in a number of stages:

\* Easington Parish Council requested that the Easington Wider Community group undertake a review of the plan created in 2004.

\* Easington Parish Council secured funding of £3660 from the National Lotteries 'Awards for All' small grants programme to cover the cost of the consultation events and publication of the parish plan.

\* The Wider Community Group devised a series of questionnaires to consult the community on their aspirations for the future. The household questionnaire included a prize draw to encourage participation. Winners Elizabeth Simmonds and Alison McLaughlin both received £100 prize money.

\* A number crunching analysis of the responses to the questionnaires was undertaken and the results fed back to the community via two Open Days, one held at the Easington Community Hall and one held at the Bluebell at Kilnsea. At these events residents were asked for further comments and ideas.

\* The Wider Community group held a number of workshop sessions where they discussed topics, results of the research and possible recommendations for action. The results of their discussions were used to create a draft parish plan.

\* The Wider Community Group created a draft version of the parish plan which was submitted to Easington Parish Council for amendment, comment and endorsement.

\* The final version of the parish plan was formally adopted by the Easington Parish Council on 3<sup>rd</sup> November 2009.





## The Parish

Easington Parish is located approximately 10 km south of Withernsea and is the most southerly parish in Holderness. In shape it resembles an elongated triangle terminating at the Spurn peninsula. Indeed the whole parish may be considered to be a peninsula, as it is bounded on the east by the North Sea on the west by the Humber estuary, and only on its north-western boundary is it joined to other parts of South Holderness. Its geographical identity is responsible both for its attractiveness and its special problems. Water defines it in many ways, and its wide open spaces and skies attract visitors from far afield. However the North Sea nibbles (and sometimes pounds) at the clay cliffs, eroding them at an average rate of two metres a year. On the western side, the erosion is much less, though flood banks are needed to keep the Humber at bay.

The parish consists of the settlements of Easington, Out Newton, Kilnsea and Spurn. The population of the parish in 2001 was 698, living in 287 households. Most parishioners live in Easington itself, which is an attractive village centred upon the church, which occupies a prominent position within a raised churchyard, overlooking the village square. In origin it is 12th century, though with many later additions. The tower is late 14th century and the chancel was rebuilt in the late 15th century. The centre of the village has been designated a Conservation Area, and many buildings, barns and walls are partially built from cobble taken off the beaches.



Adjacent to the church stands Rectory Farm, a handsome Georgian building with barns and outbuildings. Next to it, off High Street, is Easington's famous tithe barn, which is a unique example in the East Riding of a surviving aisled and timber-framed barn. It is one of the very few thatched buildings remaining in the county, and is grade II-listed. Alongside the tithe barn stands a brick and tile 19th-century horse-mill.

Facilities in the village include a post office and general store, three public houses, a primary school, a youth club, a community hall, and two caravan sites. Perhaps the most prominent feature of Easington is the three large gas terminals which cover an extensive area on both sides of Dimlington Road from the village towards Out Newton. A little to the north of the gas sites, seven wind turbines have been constructed.

Out Newton is a small hamlet approximately one and a half miles north-west of the village of Easington. It consists of a few scattered dwellings, including four farms. Apart from the area occupied by the wind farm, the land is given over wholly to farming. As elsewhere along the South Holderness coast, Out Newton is, and has been historically, subject to severe erosion by the sea.



Until 1935 Kilnsea was a parish in its own right. It is separated from Easington by Long Bank, a sinuous bank and dyke running from the Humber to the sea. It is a scattered settlement of about 30 houses lying along the only road. The village replaced an earlier one which succumbed to the sea in the first half of the 19th century. Kilnsea has a public house, a hotel (at present closed), an information centre and café, and a caravan site. Its church was deconsecrated in the late 1990s. Kilnsea is only a kilometre and a half (less than a mile) wide at its widest point just south of Long Bank. Further south the land progressively narrows until it merges into the Spurn peninsula.

Spurn is a narrow, increasingly vulnerable peninsula with a fascinating history. It is now a National Nature Reserve, owned by the Yorkshire Wildlife Trust, which took it over in 1960 from the military authorities.



Visitors come in large numbers to enjoy the sand dunes, beaches, and wildlife. At the northern end of the peninsula is Warren Cottage, which is leased to Spurn Bird Observatory, established in 1946 to record the birds and other wildlife of this unique area. In 1988 the Spurn Heritage Coast was established. The northern boundary of the Heritage Coast is Long Bank, so it includes both Kilnsea and the Spurn peninsula.

A railway, constructed in World War One, formerly ran along the peninsula to link the military fort at Kilnsea (Godwin Battery, now Sandy Beaches Caravan Site) with Spurn Fort at the tip of Spurn. In 1943, a road was built by the military and this road, much battered by the sea, still links the peninsula with Kilnsea. On Spurn Point, Associated British Ports (ABP) run the Vessel Traffic Services Centre, and the Humber Pilots use the Point as their base. The only full-time resident lifeboat crew in the country live with their families here, at the southernmost part of the parish of Easington. Spurn may seem like a little world of its own but it is part of the parish!

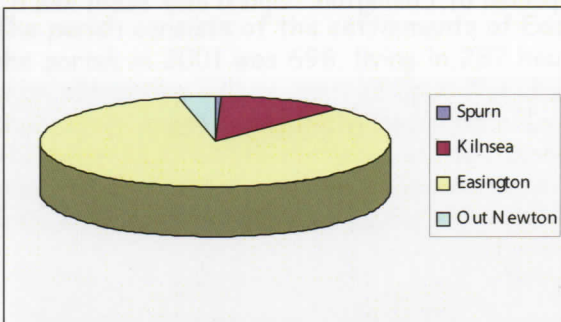




## Introduction

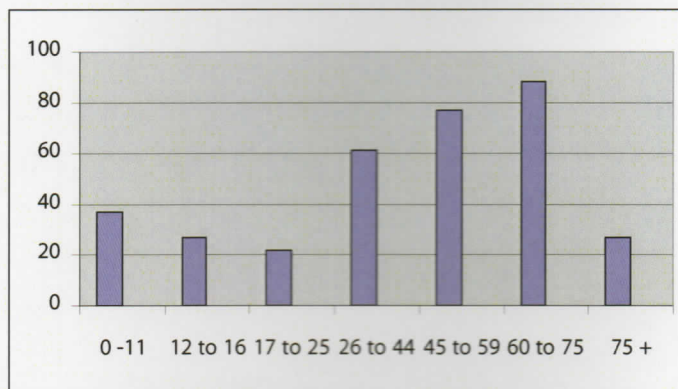
A household questionnaire asking individuals within households for their opinions on a variety of topics was distributed and collected by volunteers to each and every household within the parish. The initial feedback received from residents in Kilnsea related to the maps contained within the questionnaire which primarily showed Easington village centre. This resulted in questionnaires with additional maps being sent by post to each resident on the electoral role in Kilnsea and Spurn.

## Section One - About Your Household



The questionnaire was distributed to 304 households of which exactly half (152) replied. The responses were compared with the 2001 census and revealed that there has been a 6% increase in the number of properties since that time.

The responses showed that the number of children under the age of 16 has remained stable since the 2001 census at about 19% of the population. The survey shows that in two age groups categories the numbers have dropped significantly 16 - 24 years a fall of 3% and in the 45-64 years a drop of 10%. The survey shows an increase in the 65 - 74 year age group of 14% and an increase of 1.3% in those over the age of 75. This shows a similar trend to the whole of the rural East Riding which has a retired population increasing at a rate of about 3,000 per annum.



Research revealed that employment opportunities within the parish had remained in line with the 2001 census figures. The main employment opportunities within the parish focus on farming, the gas sites, the local school, caravan sites, public houses and shop. It was difficult to ascertain the number of self employed people working within the parish.

The survey showed that the number of households without access to transport has decreased from 64 to 23. This may reflect the reduction in public transport during the period. It also revealed a slight increase in two car families. The number of households with 3 vehicles has reduced significantly perhaps reflecting the reduction in 16 - 24 year olds within the parish.

### Recommendations

That consideration be given to the development of services and facilities to cater for the potential future needs of residents i.e. health and social care.

That consideration be given to the development of affordable housing, improved transport and employment opportunities in order to retain younger people and develop a balanced community.



## Section Two - Likes & Dislikes

This section of the household questionnaire asked residents three questions (i) What do you like about living in the parish? (ii) What do you dislike about living in the parish and (iii) What is the key thing that you would change?

### What do residents like about the parish?

The overwhelming response from residents was that they love the tranquillity of Easington parishes geographical location which provides them with rural countryside, river estuary and a coastal living environment. They value the friendliness of the community and enjoy the security provided by the Military Police, which provides residents with confidence about crime levels given the remote rural location.

Safe for children,  
the school

It has still kept  
it's village feel

Peaceful, secluded  
and friendly

Lovely quiet place-  
never any bother

### What do residents dislike about the parish?

96 responses were received to this question with 22 stating proximity to the gas terminals. Whilst it is important that this feeling is acknowledged the reality is that the gas terminals are not something that can be moved.

All of the comments were individual and therefore they were grouped into topics in order to assess people's feelings. The three topics with the most comments were:

- \* Access to public transport with particular references to no Sunday service and no regular public transport facility to Kilnsea.
- \* Speeding traffic and parking issues with particular reference to the amount of traffic entering the parish to go to the gas terminals
- \* Poor sports facilities with reference to the need to expand the range of activities available

No late night  
public transport

Poor mobile  
reception

Contract drivers disrespect  
for speed limits anuncorteous  
driving - No recycle facilities

### What would you change about the parish?

198 responses were received to this question.

Again these were grouped into categories and the results showed an even spread across the following:

- A strong desire to see the community groups within the parish working together better in order to increase the range of activities on offer and make best use of the facilities available.
- The need to have a greater understanding and devote time to the needs of all areas of the parish including Spurn, Kilnsea and Out Newton.
- The vulnerability of the area in view of coastal erosion and global warming was raised resulting in a request from 10% of respondents for improved coastal defences.
- The availability of public transport with 5% of respondents requesting a change in the timetable to enable travel to Hull earlier in the morning.
- The need to prevent further infill with housing and to ensure that the restrictions relating to the conservation area are enforced
- The need for road and traffic improvements with particular reference to the blind spot at Blacksmiths Corner and the need to review current signage clearer.

Would not  
change it

No Sunday working  
on the site - Diggers  
at 7am working -  
inconsiderate

Bring in village  
news letter

Use of the  
village garden  
for recycle bins

Road around  
gas terminals

## Section Three - Traffic & Road Safety

The main route through the parish is the B1445 from Patrington which has a speed limit which reduces to 30mph as vehicles enter the village of Easington. Most roads emanate from Easington village square with Seaside Road providing the main route to Kilnsea and Spurn Point. The road from Kilnsea to Spurn is a privately owned toll road belonging to Yorkshire Wildlife Trust. The other settlement within the parish is Out Newton which is accessed via Dimlington Road which passes between the gas terminals. There has been some discussion about the closure of this road on the grounds of health and safety.

Section 3 of the household questionnaire asked residents for their views on the speed of traffic approaching the parish and throughout the parish, where they felt that specific danger spots relating to traffic exist and what problems arise through how vehicles are parked. The questions were supplemented by maps which provided the opportunity for respondents to clearly identify specific locations referred to in their answers.



### Speed

Over two thirds of the responses to questions felt that current legislative limits on speeding within the parish were adequate. Where problems do arise this is a matter for police requiring the enforcement of existing regulation rather than altering speed limits.

Two specific areas where a number of respondents commented on the need for traffic to slow were cited. These were 'Blacksmiths Corner' Easington and 'Long Bank Drain' Kilnsea. In addition respondents commented that sleeping policemen near the Crown & Anchor in Kilnsea would help reduce speed.

Residents cited traffic to the Gas sites as being the main cause of speeding on Hull Road, though this would need to be evidenced via a targeted traffic survey to ascertain its validity.





### Heavy Goods Vehicles

The majority of residents stated that they felt the current restrictions on the size and movement of heavy goods vehicles is adequate and that whilst they can cause some problems when entering the village this is primarily due to the width of roads with a recognition that businesses and farms require deliveries.

Where residents did feel some problems occur is when vehicles destined for the gas sites enter the village and it was suggested that some improvements to signage would be useful especially for non English speaking drivers.

Over 30% of respondents suggested that the ideal solution would be for HGV's to turn off to the Gas sites prior to entering the village. This response corresponded with comments about a potential new road whereby 70% of people who completed the question stated that they felt the road between the terminals should no longer be a public access road to Withernsea. This would indicate that any proposals for a new road would be met with a positive response.



### Parking and Danger Spots

Respondents concerns about parking focussed on the High Street, Easington with particular reference made to school start and finish times.

Suggestions included making additional parking available at the school and encouraging people to walk children to school.

One or two people commented on parking in Easington village square expressing sympathy for bus drivers when people have parked inconsiderately. It was suggested that at peak times such as when the Community Hall is in use and sports events are taking place that additional land should be made available for parking and people encouraged to use it.

One respondent commented on parking at Kilnsea and the need to replace or improve the toilets facilities at the Blue Bell Car park.



The majority of danger spots cited in respondents answers related to narrow areas with poor visibility such as High Street to South Churchside and Baulk End to North Churchside. One or two suggestions were made about the positioning of mirrors to assist with visibility.

Further suggestions included:

- \* The introduction of a zebra crossing in the square would encourage pedestrians to cross at one point which may also help to encourage sensible parking.
- \* A zebra crossing near the vicarage
- \* A one way system around the White Horse Public House particularly on football match days
- \* The development of a route to allow Kilnsea residents to access Hull Road without passing through Easington Square (possibly via the development of Westfield Road Track)

Responsibility for the repair and maintenance of all roads within the parish (except that on Spurn) lies with East Riding of Yorkshire Council Highways Department and any development of new highways would need to be devised by them in partnership with police, business, land owners, the parish council and local residents.

Recommendations
That the parish council bring together representatives from East Riding of Yorkshire Council Highways Department, Road Safety Groups, Local Business, Public Transport Operators and police to discuss the issues raised by residents and seek advice on possible solutions.
That the parish council work with Easington Primary School to further develop the travel plan which will encourage parents to walk children to school and take more care when parking in that area.
That the suggestions related to land purchase to create parking when events take place be shared with the Easington Community Hall Committee, Easington Recreation and Sports Association and Easington School.



## Section Four - Footpaths and Street Lighting

Residents were asked for their comments about the state of repairs of footpaths within the parish and if they saw the need for any improvements to be made to street lighting.

The analysis of this question revealed that the wording of the questionnaire could have been better differentiating more clearly footpaths on roads and public rights of way and bridleways. 78% of respondents completed this question and the results in relation to pavements were as follows:

	State of Repair	Kerbs	Width
Good	15.38%	22.22%	16.23%
Average	52.23%	52.13%	52.13%
Poor	32.47%	24.78%	33.33%

Specific concerns were raised about the slant and width of the footpath in Kilnsea and the need to ensure that trees and hedges are not allowed to encroach footpaths. There were a number of requests for a footpath down Humber Lane to the cemetery.

60% of respondents felt that the signage for public rights of way was reasonable good as was there state of repair. Two comments were received about the public right of way through Winsetts.

Whilst not part of the community consultation the Wider Community Group noted the plans by Natural England to create a National Trail - footpath right the way around the English Coastline and the difficulties that would be incurred for such a project within the parish. Only one comment was received about street lighting

**"Street lighting should be turned off at midnight to save resources"**

### Recommendations

That the parish council monitor East Riding of Yorkshire Council street scene services maintenance programme within the parish.

That the parish council work with the Hull & East Riding Local Access Forum to ensure that residents, businesses and voluntary organisations are able to respond to any consultations about the proposed new National Trail.





## Section Five - Public Transport

The public transport available to the parish is provided by East Yorkshire Motor Services. The No 71 Service to Withernsea via either Patrington connects to either the No 76 Or No 77 bus to Hull or the No 71 via Welwick. It requires residents to travel all of the way to Withernsea to catch the Hull connection. The first bus leaves Easington at 7.50am reaching Patrington at 8.06 connecting to the 9am from Patrington which does not reach Hull until 9.52am. The last bus which can be caught back from Hull is the 16.30pm which connects with the 17.28 service from Patrington arriving in Easington at 18.04pm. This makes it impossible for anyone working a 9am - 5pm day in Hull to travel by public transport and is a major disadvantage to young people trying to access work or college. There are no buses on a Sunday with the exception of the Spurn Ranger which runs from Withernsea to Spurn during the Summer months.



Holderness Area Rural Transport is a registered charity which provides a variety of services for rural residents including a 'Dial A Ride' shopping service and a 'Medibus' which takes both patients and visitors for appointments in Hull.

These services can be accessed via:

Dial A Ride Shopping Service

Telephone: 01964 536684

Medibus  
Or email

Telephone: 08456 44 59 59

[busbookings@yas.nhs](mailto:busbookings@yas.nhs)



The community consultation revealed that 70% of people responding to the survey commute out of the parish for work, education and health services. 25% of these households commute between 25-50 miles each day to and a further 20% of households commute between 5 - 20 miles each day. Interestingly 9 people journey over 100 miles each day.

The consultation revealed that 14% of households relied on public or community transport for their journeys. In addition comments were made about young people and previous neighbours leaving the parish to continue employment or studies due to the lack of public transport provision. The general consensus was that the existing service was reasonably good for daytime shoppers wishing to visit Hull, Patrington or Withernsea but that it was unsuitable for people wishing to travel to work.

10% of respondents commented that young people were unable to access leisure service in Withernsea at night due to the lack of provision.

### Recommendations

That EYMS are approached and asked to consider extending the service to cater for:

- the working public - earlier and later buses
- students
- patients attending Patrington Surgery
- Kilnsea Caravan Park
- Kilnsea Residents (even if only once a week) - priority!

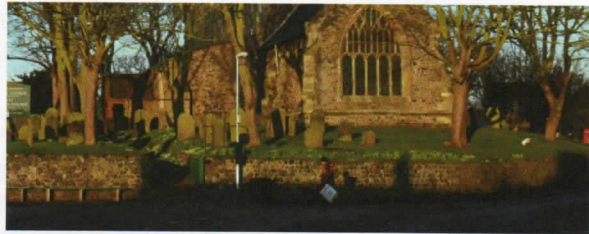
## Shelters

There is only one bus shelter in Easington Parish situated at the corner of Hull Road and Dimlington Road. Survey respondents commented on the poor condition of the bus shelter complaining of draught, smells and the general dis-repair. Many considered it to be a traffic hazard and reminisced about plans to demolish it and replace it with a clear shelter. Several people requested a bus shelter in the Square.

### Recommendation

That the Parish Council assess the state of repair of the bus shelter and consider a replacement at the existing site

That the Parish Council consider the creation of a new shelter in the Square.



## Timetables & Routes

Survey respondents commented that there is no timetable in the bus shelter and that the one in the square is often damaged or out of date. It was noted that the village shop keeps a stock of timetables.

It was noted that only three buses per day connect with services from Patrington and the alternative is to travel to Withernsea. Respondents requested increased connection with Patrington.

In addition people commented that not all buses go as far as the caravan park with many terminating in the square. It was suggested that during the summer all buses should go down Seaside Road in order to encourage visitors.



### Recommendations

That a request be submitted to EYMS place a timetable in the bus shelter and that they check and replace the bus timetables on a regular basis.

That a request is made to EYMS to extend the route as far as the caravan park and to provide some additional services to Kilnsea

Raise awareness that timetables can be obtained from the shop and request that the public houses also keep stocks.



## Section Six - Housing

This section of the survey asked residents for their views on housing within the parish. 90% of household responded to this section of the questionnaire.

The overwhelming view 89% of those who answered stated that they felt no additional house building was needed within the parish. Respondents were asked to categorise the reason for their responses resulting in the following:

No Demand	Already Too Overcrowded	Spoil the Character	Existing Infrastructure Would not Support	Other Reason
60.90%	32.72%	72.72%	56.46%	10.90%

The survey went on to ask people about the types of housing accommodation that may be needed in the future. The majority of people coming down in favour of family housing to ensure that the future of the village school is protected and adapted housing to support the needs of people as they get older.



Finally the survey asked people about how policy should be applied to the letting of housing belonging to the local authority and housing associations. 64% of respondents felt that preference should be given to people from the parish and immediate surrounding areas.

Recommendations
That the parish council take note of these results when considering planning applications
That the parish council raise the issue of housing allocations with East Riding of Yorkshire Council housing services, private landlords and housing associations



## Section Seven- Services

This section of the community consultation asked households to indicate how they feel as customers in receipt of various infrastructure services such as main household utilities (sewerage, gas, electric) street services (road surfacing when weather is poor, street cleaning, signage and information) and telecommunication services (Land line telephones, mobile reception, broad band, tv signals).



The responses with regard to household utilities showed 14% of households had some concerns about the sewerage system and its capacity to cope with any additional demands should more housing be built. People were generally happy with their electricity, water and gas supplies accepting that occasional power cuts do occur in villages. It was noted that Kilnsea and Out Newton have no mains gas supply.

With regard to street service the majority of responses indicated that they thought the level of service was average or just above average. 14% of households felt that the care of verges could be improved and a number of respondents cited problems with surface water drainage in Westfield Close. Residents living beyond Easington Square complained that gritting during bad weather conditions is non-existent.

The area of concern in relation to service was mobile telephone reception 70% of respondents complained that they had difficulty in obtaining reception for their mobile phones, though this did vary according to the network used.

Recommendations
That the parish council and ERYC take fully into account the pressure on the existing sewerage network when considering planning applications for future development
That the parish council work with ERYC Economic Development department to lobby mobile telephone providers to invest in infrastructure to improve connection within the parish
That the parish Council write to BT asking to be kept informed of any potential review of public telephone kiosks in order to ensure that they are able to make adequate representations to retain coin operated public telephone facilities within the parish
That the parish council lobby ERYC highways department to ensure that gritting extends to Spurn gate





## Section Eight- Environment

This section of the questionnaire asked residents for their views on how the parish should respond to climate change and what environmental improvements they would like to see.

### Recycling

The current recycling facilities available to residents are a bottle bank at the Crown & Anchor in Kilnsea. The next nearest full facility is at Withernsea. The parish council have been approached on numerous occasions but failed to find a suitable site. Respondents almost unanimously stated that they would use recycling facilities if they were available.



### Waste

Residents were asked if they had problems with the disposal of particular items. The main items raised were the disposal of furniture, tyres, batteries and gas bottles. East Riding of Yorkshire charges £25 per load for the removal of furniture. It was felt that this charge may be the reason for occasional fly tipping in the dykes and layby.

### Recommendations

That the parish council work with East Riding of Yorkshire Council to raise residents awareness of services

That the parish council lobby East Riding of Yorkshire Council to facilitate bi-annual bring out your rubbish days providing skips for bulky household items



### Eco Friendly Housing

Residents were asked if the parish council should encourage improvements to properties to make them more environmentally friendly.

This question received a positive response with 72% in favour of solar panels, 64% in favour of small wind turbines and 50% in favour of cladding. However, respondents also pointed out that care needs to be taken in the conservation area within the parish and that residents should be discouraged from cladding over traditional cobble built buildings.

### Recommendation

That the parish council work with the Council for the Protection of Rural England and Skeals to raise awareness about the need to preserve traditional buildings



### Community Composting

53% of respondents stated that they would be interested in a community composting scheme. However ERYC has since introduced a brown bin scheme for composting alleviating the need.

### Planting Schemes and Seating

The parish currently has a local amenity group which has in the past obtained money for bulb planting on the approach road and opposite the Granby Inn and near the cemetery. 58% of respondents stated that they would like to see additional planting.

The parish council is currently responsible for the maintenance and repair of seats in the parish. Respondents stated that they would like to see more.

### Recommendation

That the parish council carry out a review of the location of seats and consider whether relocation of existing seats or the provision of additional seating is necessary



## Section Nine - Churches & Chapels

The Methodist Chapel in Seaside Road and the Anglican Church on its mound in the Square are the only places of worship left in the Parish.

There is a service in church each Thursday and every Sunday except for the first Sunday in each month when the parishioners join the chapel congregation for their once a month service. The Methodists are invited to worship in church on the other Sundays.

Easington has a closed churchyard, maintained by Easington Parish Council, but cremated remains can be interred there. Other burials take place in the cemetery.



Although the Kilnsea church building has been sold the churchyard there remains open. Maintenance of this is under the auspices of the Rector of Easington but because the local church in Easington is only as rich as its income from the collection plate, to keep Kilnsea Churchyard tidy, volunteers are always welcome.

With support from the Enhancement Fund, gas central heating has been installed in the church and the organ is being restored.

With some of the ring-fenced proceeds of the sale of the church hall, a toilet and kitchenette are proving useful. The toilet is an added bonus to the already wheelchair friendly building.

The Paraochial Church Council look after the church finances and are grateful for all the support from residents. It was a struggle to pay for the rewiring of the millennium lights but encouraging comments have been received concerning the once again illuminated church.

The household questionnaire asked people how much they value the places of worship in the parish. The response showed that the majority of the people value the buildings as part of Easington's Heritage, providing character to the parish and a focal point for key family events such as weddings, baptisms and funerals. They felt that support should be provided by everyone to ensure the upkeep of the churches.

There were some comments made about the access to the church.



### Recommendations

1. Make people aware of who to contact if the church is not open.
2. To encourage people to take part in church events
3. To encourage people to contribute to the upkeep of the churches



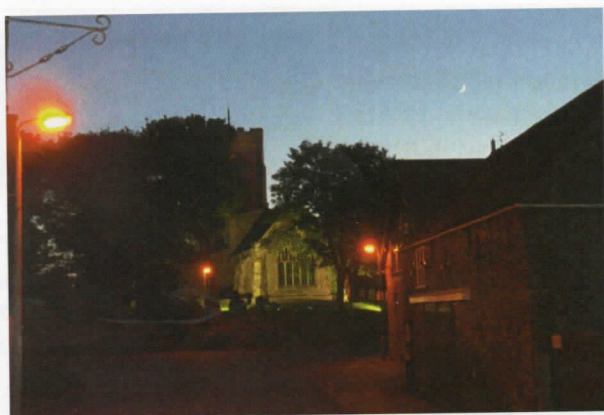
## Section Ten - Crime & Community Safety

The current situation is that levels of crime within the community are low. Humberside police 2009 statistics for the area show that household burglaries run at less than 1 per 1000 households in the East Riding. The typical types of crime reported in this community are what are termed by police as low level nuisance crimes such as graffiti, vandalism, anti-social behaviour and traffic offences. These whilst classified by police as low level are felt by the community to be of great concern.

Recommendations
That the parish council use the detailed data in the questionnaire analysis to inform the Neighbourhood Police Officer and Police & Partners Community Forums of issues of concern
That the parish council raise residents awareness of the opportunity to attend the Police & Partners Community Forums

Residents were asked how they felt about the security provision provided in relation to the gas sites. The overall response was very positive about the MOD presence. However people felt that if they were not here policing would be inadequate.

Residents were asked if there were times and places where they did not feel safe. A small minority commented that they felt unsafe at night and when youths are hanging about in the square.



A further concern was about the alarm/siren sounds at the gas terminal. The view being that it is difficult to know if it is a routine test or if an incident is occurring which may affect the village residents.

Recommendation
That the parish council liaise with representatives from the gas terminals and ERYC Emergency planning officers to try and resolve this issue

The community consultation also asked residents for their views on other community safety issues such as Ambulance Response and Fire Brigade Response times and other services.

The consensus was a recognition that response times to remote rural settlements will always be longer and that current provision is adequate. However people also voiced concerns that the service provision must not be reduced any further and suggested that a localised 'First Responder Scheme' may help.

A 'First Responder Scheme' is where a number of volunteers within a community are training by the Yorkshire Ambulance Service to respond in the case of medical emergency whilst awaiting the arrival of a ambulance. The Yorkshire Ambulance Service providing full training, insurance and kit for volunteers involved. 27 people indicated that they would be interested in volunteering for such a scheme.

Recommendations
The parish to contact the ERYC Emergency Planning Officer for advice and guidance on how to develop a more localised emergency plan
That the volunteers identified as part of the consultation process be invited to a meeting with Yorkshire Ambulance Service in order to find out more about 'First Responders Schemes'.



## Section Eleven – Communication

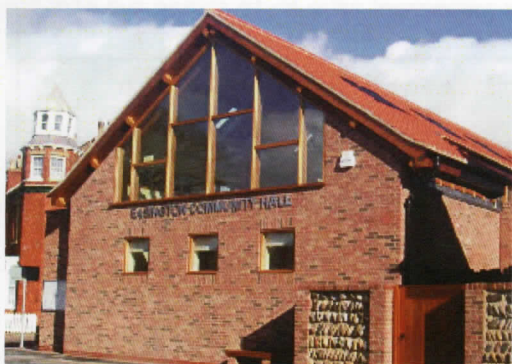
Information about the Parish Council and Community Hall is currently displayed on two parish notice boards and the community hall notice board. All Saints Church displays information in the porch and produces a weekly leaflet available at services. The school communicates with parents via information sheets and notes taken home by the children.

Other information is communicated via posters in public houses and house windows, by word of mouth at regular coffee mornings.

The majority of the public's response was a request for a Parish Newsletter similar to Roos or Skeffling. 95 people stated that they would like to receive regular newsletters and 14 people were willing to get involved with the running of it.



Notice boards were also popular – there is a notice board in Easington Village Square which displays the Parish Council news and there is also one in the car park at the Crown Anchor Inn at Kilnsea. It is hoped in the near future to have a notice board in Out Newton. There is also a Community Hall notice board outside the Community Hall displaying all their activities.



38% of replies were in favour of a website for information. 8 people were willing to get involved in running it.

37% of the respondents would like more liaison meetings. Every 3 months there is a meeting in the Easington Community Hall ahead of the Parish Council meeting, when representatives from the gas terminals are invited to attend. These are BP, Centrica and Gassco. The meetings are open to the public and anyone can express their concern or ask questions about the terminals. No more than 12 members of the public attend these meetings.

Recommendations
That a review of the liaison meetings takes place including the regularity, usefulness and publicity
That the gas terminals be encouraged to produce more regular newsletters
That the parish council call a meeting to bring together people who expressed an interest in the development of a parish newsletter and website

### Parish Council

The parish council meets on the first Tuesday of each month (excluding January and August) at 7pm in the Easington Community Hall. Members of the public are invited to attend and the 4<sup>th</sup> item on the agenda is set aside for the public to speak in the 'public forum'. The council allows for 3 minutes per person to speak on anything appertaining to the parish. No more than 10 members of the public attend these meetings. The meetings are advertised in advance on the village notice board.

Other comments about communication included:

"We seem to have lost our sense of belonging and the community spirit that was in this area a few years ago has disappeared."

"There is apathy in the Parish as no-one wants to get involved but everyone wants improvements."

Recommendations
That the many activities that take place in the parish are promoted and all residents are encouraged to attend and participate
That the newsletter and website are used to promote all activities



## Section Twelve- Facilities

The current facilities available in the parish are three public houses in Easington Village and one at Kilnsea, one shop, one post office, Blue Bell Information Centre and café at Kilnsea, Spurn Information Centre, Easington CE VC Primary School, youth club, community hall, recreation and sports field, riding school, children's play area, citizen link, two telephone boxes, public toilet at Kilnsea, nature reserve, and mobile library which attends fortnightly on a Wednesday. There is a mobile fruit van and butchers. Children over the age of 11 have to travel out of the parish to Withernsea or beyond for their secondary education. The parish has no medical facilities and residents have to travel to Patrington, Withernsea and beyond to access a doctor, dentist, optician, pharmacy and all other medical services. The nearest veterinary surgery is at Patrington.

The survey specifically asked residents for their opinions about the development of the Youth Club, Community Hall and Easington Recreation and Sports Association

### Youth Club

Residents were asked what new activities they would like to see in the Youth Club. Several respondents stated that the Youth Club building should focus on activities for children and young people of the parish and that adult education would be better suited to the community hall. The new activities to be developed in order of preference were keep fit, dancing, computer club, social events, arts & crafts, luncheon clubs and indoor sports.

Recommendation
That the detailed results be shared with the Youth Club Committee to assist them to develop activities

### Community Hall

Residents were asked what types of activities they would like to see developed in the community hall. The highest response was for social events such as dances and parties, 72% requested the development of adult education classes and keep fit was the third most popular option. It was good to see that 54% of respondents wanted access to computers as this facility has been introduced whilst the parish plan was being written. Various other suggestions included indoor sports, arts and craft and whist drives. The least popular suggestion was luncheon clubs.

Recommendation
That the detailed results be shared with the Easington Community Hall Committee in order to assist them to develop the facility

### Easington Recreation and Sports Association

Residents were asked what sports facilities they would like to see developed. In order of popularity the results were

- |                 |                   |
|-----------------|-------------------|
| 1.Tennis        | 2.Fitness Circuit |
| 3.Putting Green | 4.Outdoor Bowling |
| 5.Basket Ball   | 6.Cricket         |
| 7.Netball       | 8.Rugby           |
| 9.Rounders      | 10.Soft Ball      |

People commented that they would also like to see the facility used for family fun days.

Recommendation
That the detailed results be passed to Easington Recreation and Sports Association to assist them with their plans to develop the site

It should be noted that all of these facilities are managed, maintained and staffed primarily by volunteers, therefore the development of respondents ideas is not only dependant on money raised from grants, donations and fund raising events BUT also on the time, goodwill and expertise of volunteers.

Recommendations
That additional volunteering be encouraged within the parish
That current volunteering opportunities within the parish be promoted



## Section Thirteen

Finally Section 13 of the consultation asked residents if they had anything else they wished to add.

29% of respondents to the household questionnaire completed this section, providing both compliments to the parish plan steering group for asking their opinion on a wide range of issue and to the parish council for providing community leadership.

The primary issue that respondents felt that the household questionnaire had not addressed was the one of coastal erosion and flooding. This had been a deliberate move by the parish plan steering group which felt that the existence of meetings specifically focussed on the topic provided the opportunity to gain information from another source.

Easington Parish is made up of 4 distinct areas, Easington village itself, the hamlet of Out Newton, Kilnsea village and the nature reserve of Spurn point. The parish is bounded by the North Sea to the east and the River Humber to the south and is threatened by flooding from both fronts, the eroding coastline of the sea and the threatened loss of maintenance of the flood banks which protect the parish from flooding from the River Humber.

The East Yorkshire coastline is the fastest eroding coastline in Europe and will continue to erode and eat into our parish at an ever increasing rate.



Respondents also felt little consideration had been given to the beach as an important feature of the parish. They felt that work should be undertaken to ensure adequate access to the beach is available preferably via a slipway and that some beach cleansing operation would be of benefit.

Several respondents who commute out of the parish to work whilst their children attend Easington Primary School expressed concern as to how they would be contacted should an emergency occur at the gas site and a major evacuation take place.



The need for a footpath down to the cemetery was re-raised as was the issue of public toilet provision.

Residents also used this section to share their views on the ERYC Citizen link situated in Easington Village Square. No respondent ever recalled it being used, some reminisced about the demise of the village garden in order for it to be built and the majority felt it would serve the parish better if converted either into a bus shelter or public toilets.

## **Action Plan & Review**

The detailed statistical results of the consultation events and the recommendations in this plan have been put together in another document.

### **"Easington Parish Plan Action Plan."**

This document is being circulated to all community groups and organisations within the parish to support them to develop facilities and provide statistical evidence which can be used to help with funding applications and requests for assistance from other bodies.

The Easington Parish Plan and Action Plan will be adopted by Easington Parish Enhancement Fund to guide their decisions when making grant awards.

In addition the Easington Parish Plan and Action Plan is being circulated to key service providers i.e. East Riding of Yorkshire Council, Humberside Police, East Riding Primary Care Trust, Humberside Fire and Rescue. With a request that they consider its contents when deciding on how services are delivered.

And perhaps most importantly the Easington Parish Plan and Action Plan has been adopted by Easington Parish Council and will be used to assist their decision making and guide their future actions.

## **Review**

The Easington Parish Plan Action Plan contains over 50 recommended actions to address the issues raised by the community during the consultation process. Obviously some recommendations will be easier to achieve than others and everything cannot be tackled at once.

In order to monitor progress towards achieving the goals set via the recommendations in the Easington Parish Plan the Action Plan will be reviewed yearly at the Annual Parish meeting.

- The review of the action plan will become a formal item on the agenda for the meeting and the Easington Parish Council will report on each recommendation. This will provide residents with the opportunity to comment, raise new issues and shares their ideas on how things can be moved forward.

To close we thought we would share with you a couple of positive comments made during the consultation process which illustrate what a great place Easington Parish is!

"We love the area and want to become part of the community.  
We can't wait to live here full time when work is complete on the cottage."

"Very pleased. Has a smart community Easington Village supports all charitys and gives generously"